

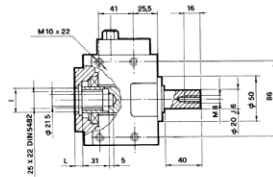
EMBRAIAGENS MECÂNICAS

MECHANICAL CLUTCHES



H06.30100

GR 1-2
IM 0.5
(25X22)



GRUPO - 1 UNIT - 1

A - 26,3
B - 72
C - 52,4
G - M6X12
H - 92,5
I - 25,4 H7
L - 7

GRUPO - 2 UNIT - 2

A - 32,5
B - 96
C - 71,4
G - M8X15
H - 95,5
I - 36,5 H7
L - 10

CARACTERÍSTICAS:

São unidirecionais e bidirecionais. Ao acoplar com bombas hidráulicas, recomendamos o acoplamento e desengate do bombear quando a válvula direccional está na posição de escape a uma velocidade não superior a 1800 R.P.M. Na posição reversível a velocidade máxima de engate e desengate é de 1000 R.P.M.

LUBRIFICAÇÃO

Petróleo tipo SAE 90.
Trocar o óleo de 12 em 12 meses.
Temperatura máxima de trabalho + 80°C
Temperatura mínima de trabalho -10°C

CHARACTERISTICS:

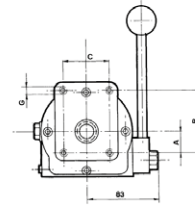
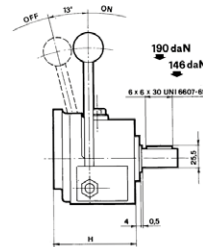
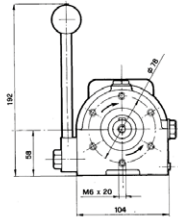
They are unidirectional and bidirectional.

When coupling with hydraulic pumps we recommend to engage and disengage the pump when the directional valve is in exhaust position at a speed not over 1800 R.P.M.

In the reversible position the max engagement and disengagement speed is 1000 R.P.M.

LUBRICATION

Oil type SAE 90.
Change oil every 12 months.
Max working temperature + 80°C
Min working temperature -10°C

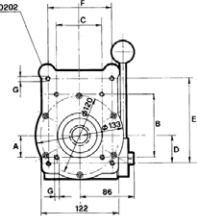
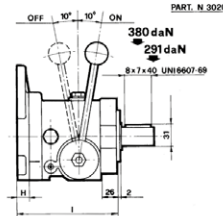
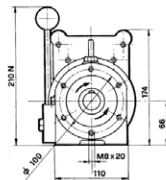
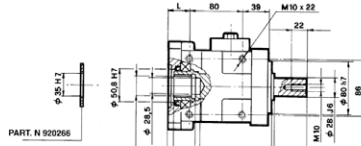


GRUPO - 2 | 3 UNIT - 2 | 3

A - 32,5
B - 96
C - 71,4
D - 42,5
E - 128
F - 98,4
G - M8X15
H - 19
I - 151
L - 32
M - 8,6

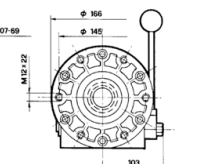
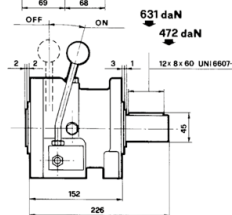
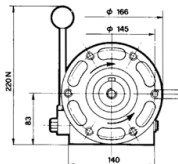
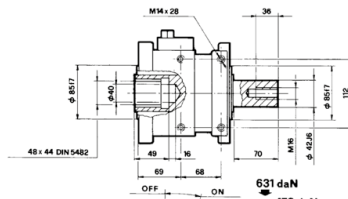
H06.30300

GR 2-3
IM 1
(35X31)



H06.30500

GR 3-4
IM 2
(48X44)



REFERÊNCIA CODE	DIRECÇÃO ROTAÇÃO DIRECTION OF ROTATION	GRUPO UNIT	VELOCIDADE MAX. MAX. SPEED	POTÊNCIA MAX. SAÍDA MAX. POWER OUTPUT	CARGA AXIAL AXIAL LOAD	TORQUE NOM. NOM. TORQUE
H06.30100	REVERSIBLE	1 2	2000 RPM	30 Kw	120 daN	9 daNm
H06.30300	REVERSIBLE	2 3	2700 RPM	40 Kw	160 daN	18,5 daNm
H06.30500	REVERSIBLE	3 4	2700 RPM	60 Kw	260 daN	58 daNm